

## Lumbar Enlargement of the Spinal Cord

In 1860, the same year that he graduated from Harvard Medical School, Dr. James Dean communicated a paper on “The Lumbar Enlargement of the Spinal Cord” to the Academy through his colleague Dr. Jeffries Wyman. As he states in the opening of his communication: “I propose, in the following paper, to notice a few points in regard to the structure of the spinal cord, confining myself chiefly to a description of the course of the fibres forming the nerve-roots, as they pass through the white and gray substances to their final union with nerve-cells, discussing somewhat at length the relation which nerve-cells and fibres sustain in the cord.” His communication was published in the Academy *Memoirs* in 1861 (vol. 8, no. 1) and was his first major publication.

In Dean’s obituary in the *Boston Medical and Surgical Journal* he was referred to as “the pioneer in American microscopic studies of the structure of the central nervous system.” Dean (1831 – 1888) was elected to the American Academy in 1862.

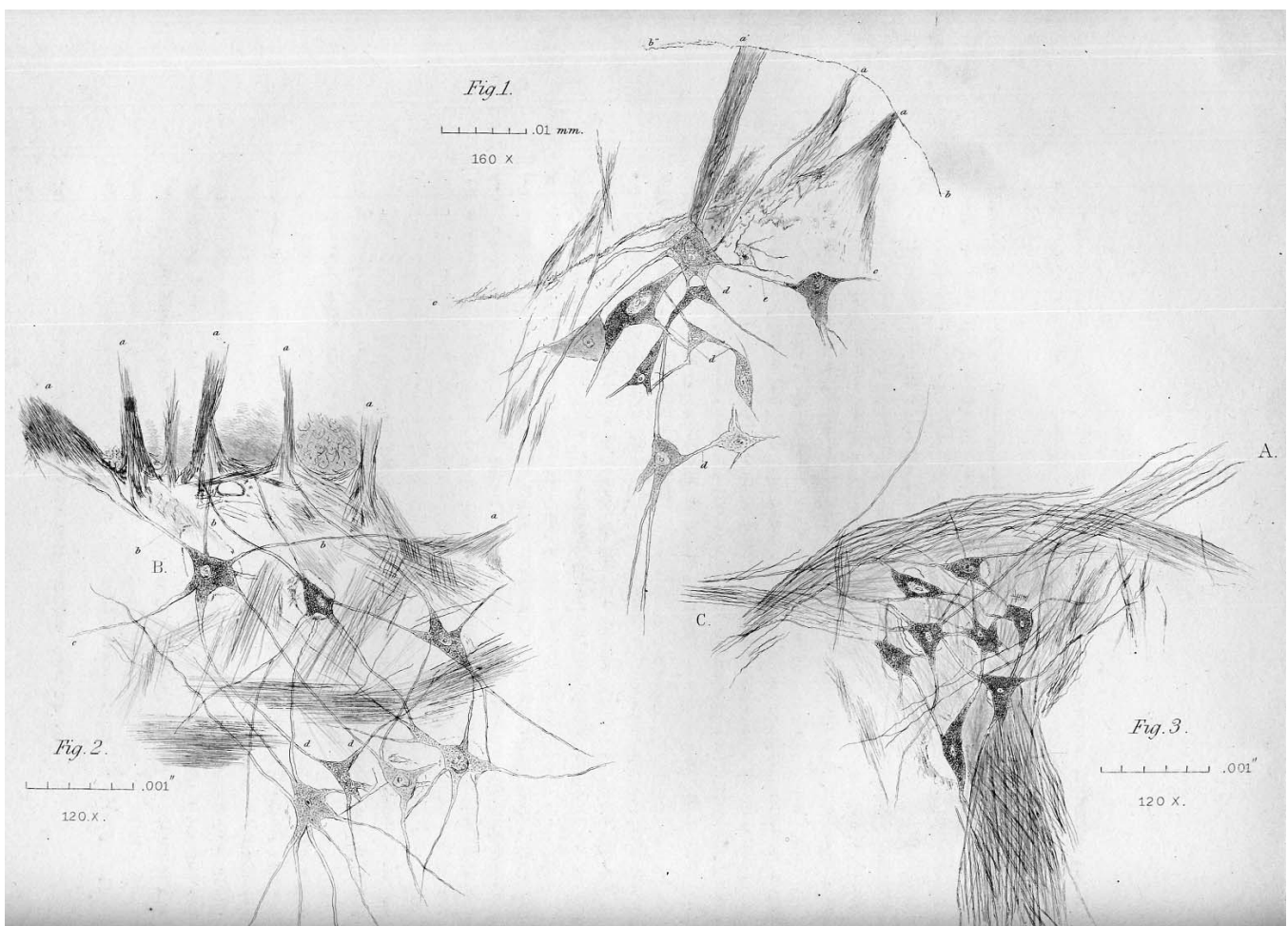


Figure 1. Transverse section representing part of the anterior cornu, from the lumbar enlargement of the rabbit.

Figure 2. Group of cells from the anterior cornu of the sheep, connected with the radiating bundles from which the longitudinal fibres of the white substance are derived.

Figure 3. Group of cells from the anterior cornu of the sheep, connected with the anterior roots at A.

Dean drew all the figures himself, by means of the camera lucida, and then etched them onto copper.